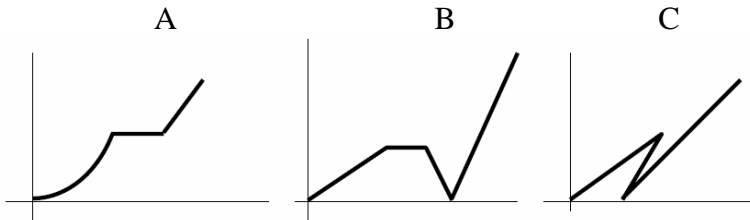


Stories & Graphs

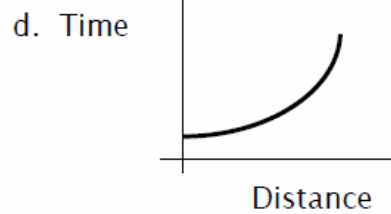
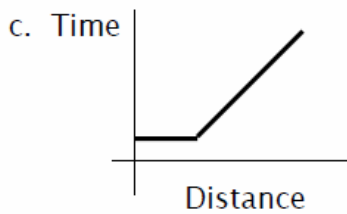
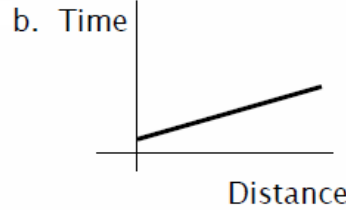
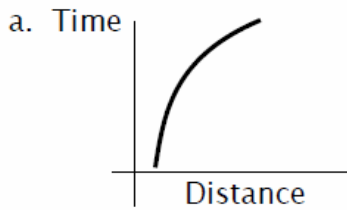
Name _____ Hr _____

Choose which graph matches the situation.

1. Jeffrey left his home headed toward the school. He started out at a steady moderate pace until he got to a red light. While stopped at the light, he realized he had forgotten his math homework. He turned around and headed back home at a faster pace. Then he drove to school at a fast pace with out stopping on the way.

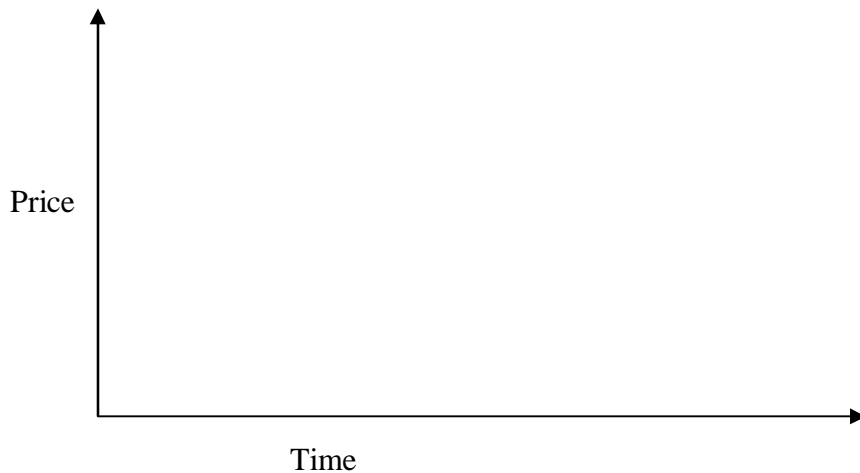


2. Which path would describe Celia's bike trip, if Celia rode slowly at first and gradually increased her speed?



Draw a graph for each situation. Label the letters on the graph.

3. The price of a game console system varied over a period of time. A) It started high and remained the same for a period of time. B) Then it had a steady decrease until it reached an all time low, C) where it stayed the same for a period of time. In the end, D) it gradually raised as a collectors item until it E) leveled out near its original price.



4. A golden retriever puppy was chasing a ball and bringing it back to its owner. On one particular throw, the puppy started by the owner (a), chased the ball (b), brought it half way back (c), and then sat down and stared at a frog before finally picking it up and bringing it (d) slowly back to the master.



5. A car's travels are shown in the graph. Describe what could be happening at each point on the graph.

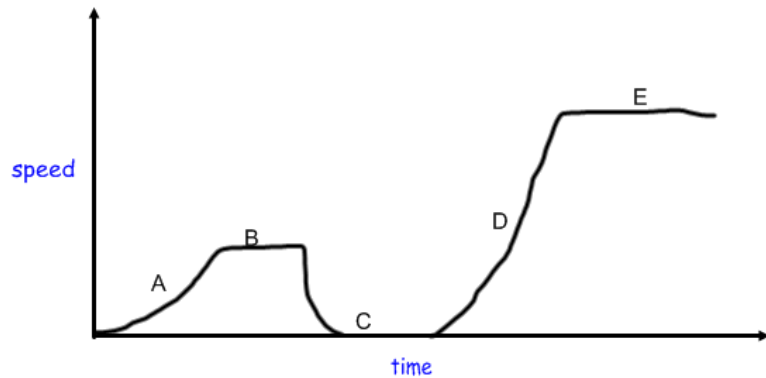
A

B

C

D

E



6. Write a story that could be represented by the graph. (suggestions: Money, Distance, Speed, or anything else)

