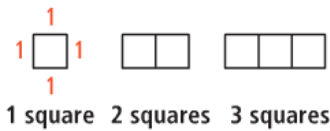


4-2 pg. 243 #2, 3, 5, 8-14

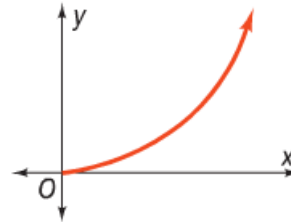
2. Use the diagram below. Copy and complete the table showing the relationship between the number of squares and the perimeter of the figure they form.



Number of Squares	Perimeter
1	4
2	6
3	■
4	■
10	■
■	62
n	■

3. **Vocabulary** The amount of toothpaste in a tube decreases each time you brush your teeth. Identify the independent and dependent variables in this relationship.

5. **Reasoning** Does the graph below represent a linear function? Explain.



For each table, determine whether the relationship is a linear function. Then represent the relationship using words, an equation, and a graph.

8.

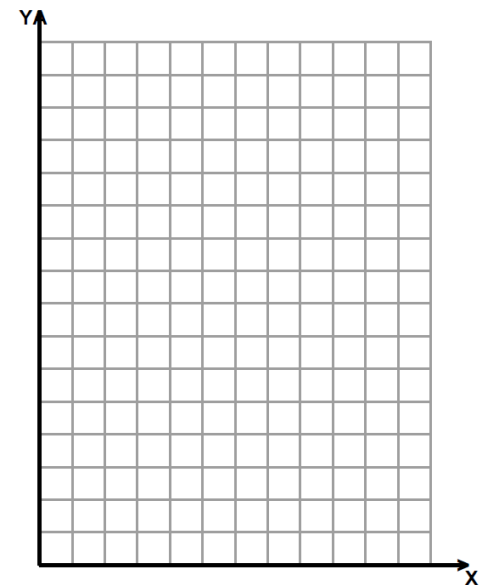
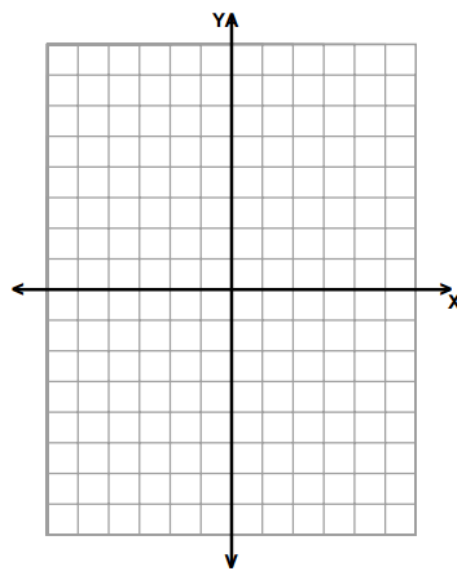
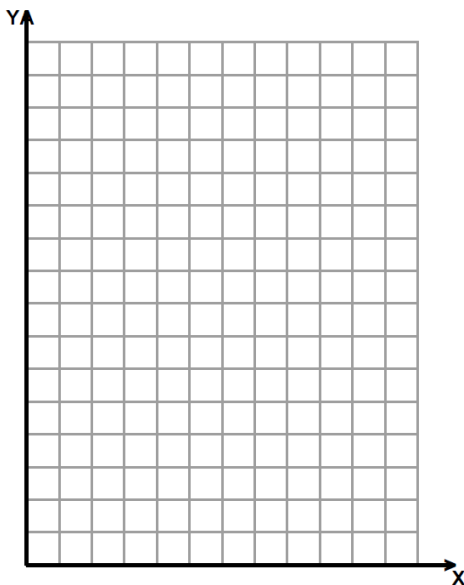
x	y
0	5
1	8
2	11
3	14

9.

x	y
0	-3
1	2
2	7
3	12

10.

x	y
0	43
1	32
2	21
3	10



For each table, determine whether the relationship is a linear function. Then represent the relationship using words, an equation, and a graph.

11. **Mountain Climbing**

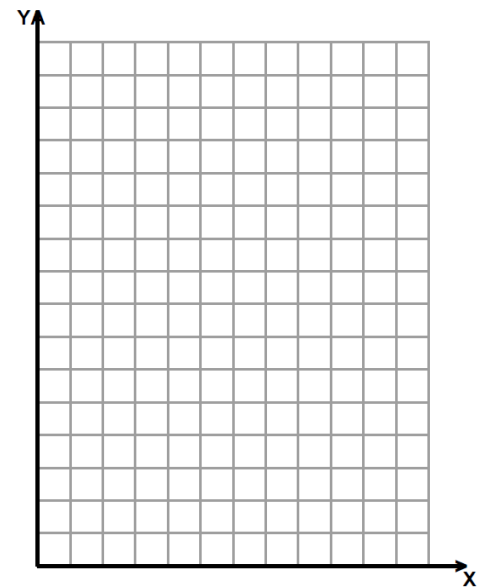
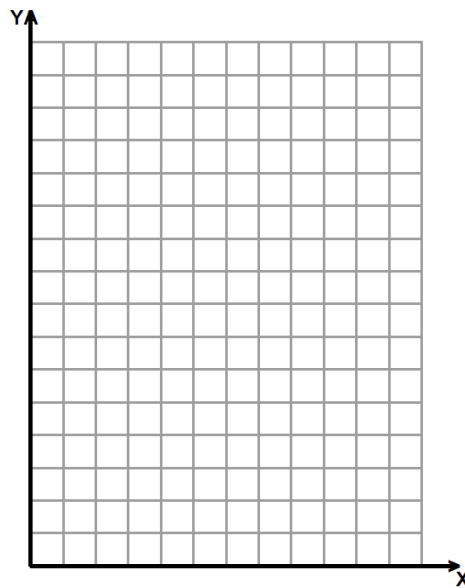
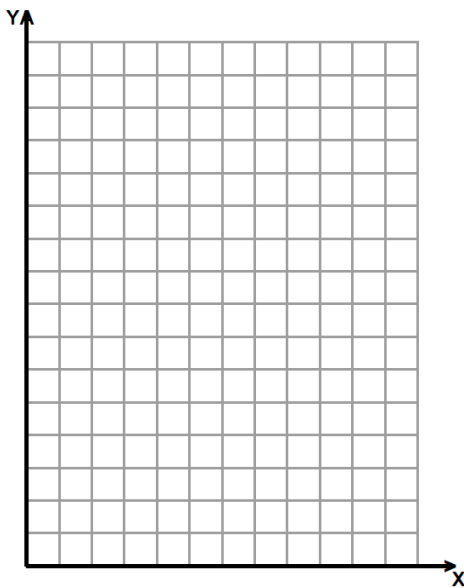
Number of Hours Climbing, x	Elevation (ft), y
0	1127
1	1219
2	1311
3	1403

12. **Grocery Bill**

Number of Soup Cans, x	Total Bill, y
0	\$52.07
1	\$53.36
2	\$54.65
3	\$55.94

13. **Gas in Tank**

Miles Traveled, x	Gallons of Gas, y
0	11.2
17	10.2
34	9.2
51	8.2



14. **Error Analysis** A bakery makes bread in batches. Several loaves per batch are rejected for sale due to defects. Your friend says that the total number of defective loaves is the independent variable. Explain and correct the error.
