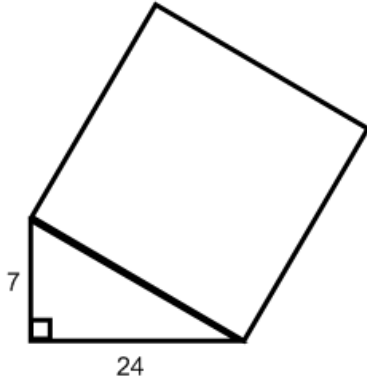


$$\square + \square = \square$$

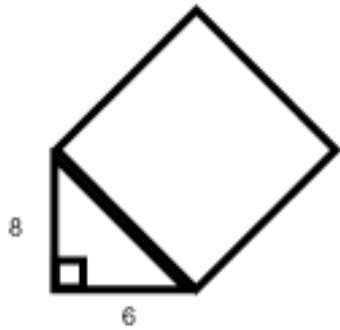
Name \_\_\_\_\_ HR \_\_\_\_\_

### Proving the Pythagorean Theorem Homework

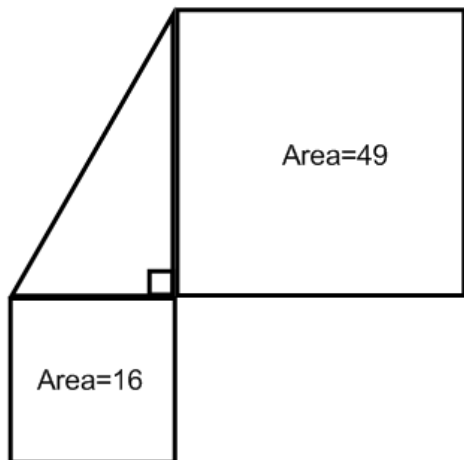
1. Find the area of the square.



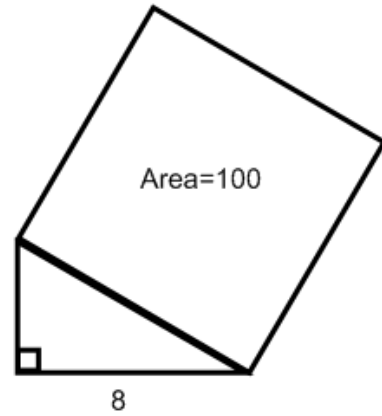
2. Find the area of the square.



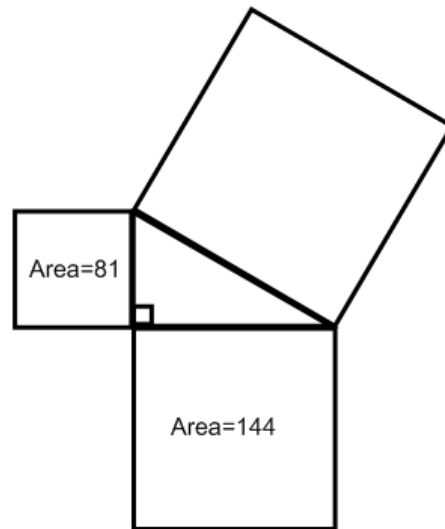
3. Find the lengths of the legs.



4. Find the length of the missing leg.



5. Find the length of the hypotenuse.



6. Use  $a^2 + b^2 = c^2$  to find the hypotenuse.

