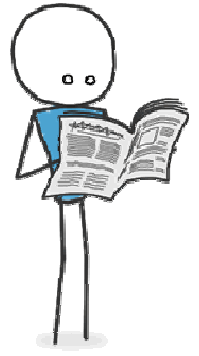


## Article of the Month: Eighth Grade

The Article of the Month (AoM) is a monthly assignment in which students will be reading a current issue being addressed in the *Junior Scholastic* magazine.



### Part 1: Complete the Reading Response

1. Read the article without making any notes.
2. Read the article again while making legible responses in the margin.
3. Minimum response requirement:
  - a. Two meaningful/mindful responses reacting to the introduction
  - b. Three meaningful/mindful responses reacting to the affirmative side
  - c. Three meaningful/mindful responses reacting to the negative side
4. Responses must include:
  - a. Comments that demonstrate your understanding of the article (summary/statement/opinion/reaction) or questions you may have as you read
  - b. All responses must be in complete sentences and/or extended phrases
5. After finishing the responses, complete a final quick read noting anything you have missed during the first two reads

### Part 2: Written Response

After reviewing the article, write a written response of it using the They Say/I Say format in the box on the back of this paper. The following guidelines must be followed for full credit:

- Deep, meaningful/mindful response to the article
- Handwritten in legible handwriting; if I cannot read it you will be asked to fix it and it will be considered late
- Written on lined paper; use the back for additional space
- Written in black or blue ink; I suggest making a rough draft then writing a final draft with an erasable pen (only final draft needs to be handed in)
- Must use the They Say/I Say format (basically fill-in the blanks)
- No distracting errors
- When completed, make sure your name/date/hour is in the top right right-hand corner; staple your written response to the front of the article

### Due Dates

Because of the nature of this assignment, all due dates for the first semester are given below. Please note, since due dates are given out in advance, all students who are present on the due date are expected to hand the assignment in regardless of whether or not being absent the day before. In the event of an unforeseen school closure, the assignment will be due upon return to school. If there is an unanticipated change in the schedule, then students will be notified of any due date changes.

- September Article due Thursday, 9/28
- October Article due Friday, 10/27
- November Article due Thursday, 11/30
- December Article due Friday 12/15
- January Article due Friday, 1/26

### Content Expectations

- CCSS.ELA-LITERACY.WHST.6-8.1: Write arguments focused on discipline-specific content.

## They Say/I Say Format

choose one Title same side

The general (affirmative/negative) argument in the article "Name of Article" by Author is that position summary. More specifically, the (affirmative/negative) side argues that article evidence. The article states that, "direct quote." In this passage, it is being suggested that explain quote. Given these points, the (affirmative's/negative's) belief on the issue is restate first blank.

same side choose one

In my view, the (affirmative/negative) side is (accurate/mistaken) because take a stance. To be precise, I believe that why do you dis/agree. For example, specific example why. In the article, the (affirmative/negative) side argues that position summary. I consider this stance to be (correct/incorrect) because the article mentions that article evidence. Therefore, I conclude that restate first blank.

other choice other side New source

My opinion is supported by the research presented in the additional (article/website) "Name of Article/Website" by Author because it implies that article evidence. The (article/website) directly states that, "Direct quote." In other words, it is being suggested that explain quote. Therefore, I conclude that my view on the issue is correct and restate stance.

## Grading

This assignment is worth 15 points. The following rubric will be used to determine grades:

### Reading Response (4 pts.)

Minimum response requirement:

- Two meaningful/mindful responses reacting to the introduction (1 pt.)
- Three meaningful responses reacting to the affirmative side (1.5 pts.)
- Three meaningful/mindful responses reacting to the negative side (1.5 pts)
- Complete sentences or extended phrases (-.25 for each response that is not a complete sentence or an extended phrase)

### Written Response (11 pts.)

Minimum response requirement:

- Deep, meaningful/mindful response to the article (4 pts.)
- Use the They Say/I Say format (5 pts.)
- Written in black or blue ink (2 pts.)
- No distracting errors (-2 pts. for errors)
- Handwritten in legible handwriting (re-write if typed or illegible)

Keep this copy at all times. No additional handouts will be printed. For extra copies, please visit the class online Weebly.